

# For Sale

**1.78 Acre Industrial Lot**  
Easton Industrial Park  
18 Hampden Drive, Easton, MA 02356



## Property Features

- Excellent Route 24 Access
- Industrial Park Location At Junction Of Routes 123 & 138
- Newly Created Lot
- Includes On-Site Fill Pile
- Industrial Zoned
- Light Industrial, Office, Retail, Day Care Allowed
- Town Water & Natural Gas
- To Be Sold 'Building Permit Ready'
- Building Footprint 15,200 ± SF
- Asking \$475,000

## For More Information Contact Exclusive Agent

Steve Porter

Tel: 781-982-2929

Tel: 508-824-7946

Email: [Info@DeanRealEstate.com](mailto:Info@DeanRealEstate.com)

Visit: [www.DeanRealEstate.com](http://www.DeanRealEstate.com)

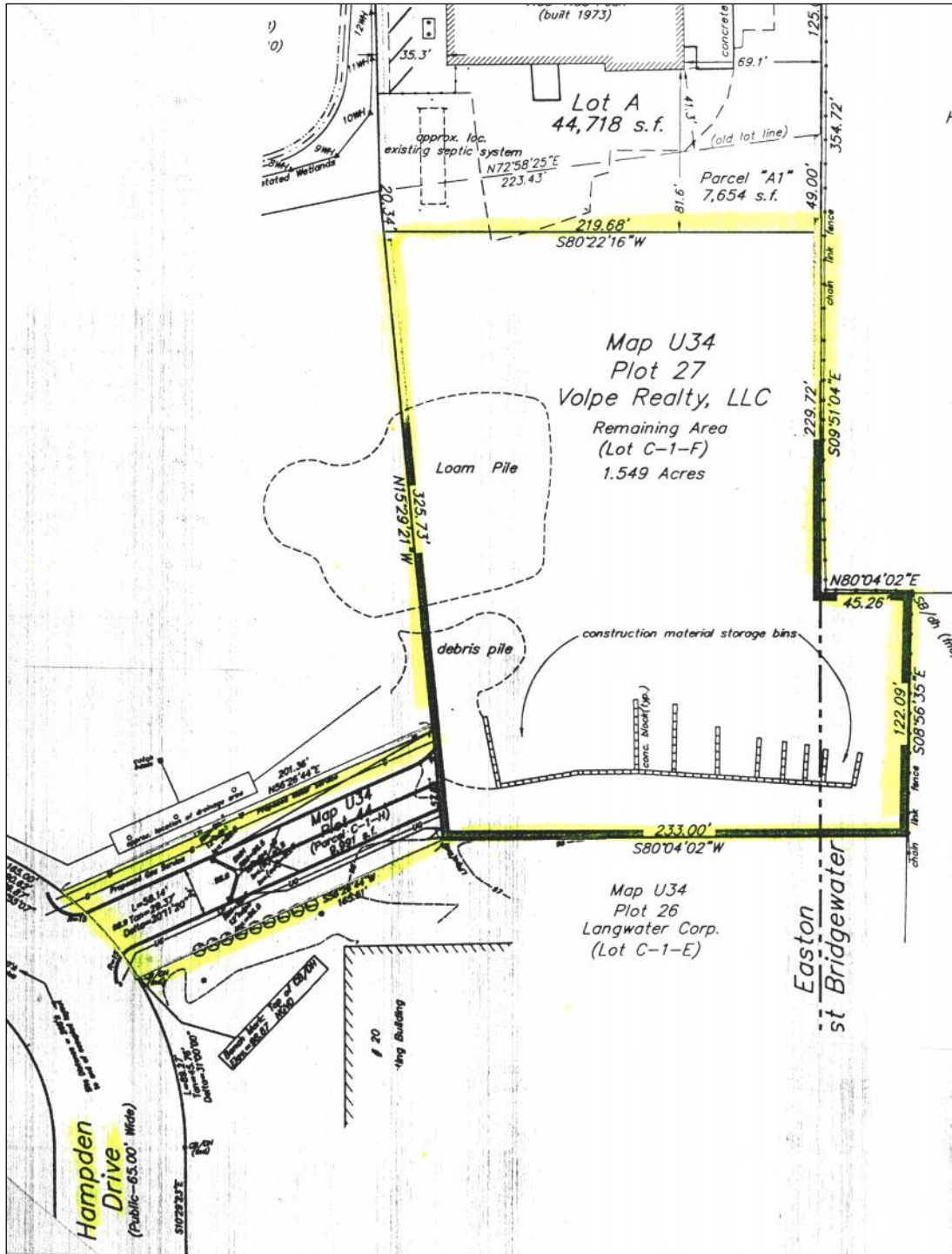


*Specialized Experience You Can Trust*

'No warranty or representation, express or implied, is made as to the accuracy and completeness of the information contained herein, and the same is submitted subject to errors, omissions, change of price, rental or other conditions, withdrawal without notice.'

**For Sale**

**1.77 Acre Industrial Lot**  
Easton Industrial Park  
18 Hampden Drive, Easton, MA 02356



**For More Information Contact Exclusive Agent**  
Dean Real Estate, Inc. - Steve Porter  
781-982-2929

'No warranty or representation, express or implied, is made as to the accuracy and completeness of the information contained herein, and the same is submitted subject to errors, omissions, change of price, rental or other conditions, withdrawal without notice.'